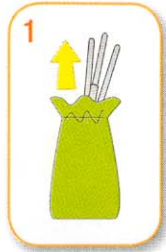
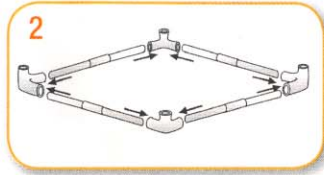


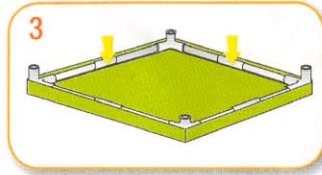
Assembly



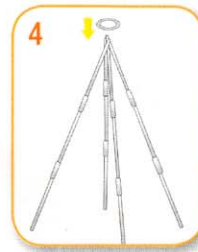
1 Remove your Tepee & parts from the bag.



2 Take 4 short rods & 4 connectors. Attach the rods to the connectors, forming a square frame. Ensure all slots labelled TOP are empty & facing upwards.



3 Place the square frame inside the outer shell, over the base, ensuring it's tucked into each corner.



4 Take the final 4 long elasticated rods & place the plastic ring over the top - this will stop the outer shell from sliding down.

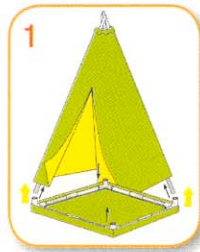


5 Slide on the outer shell ensuring the corners line up with the poles.



6 Finally, attach the rods to the remaining slots in the base. Your Tepee should now be ready for use.

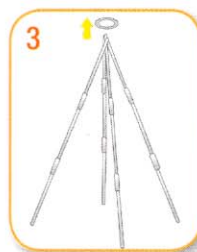
Storage



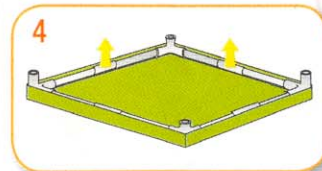
1 Begin with detaching the long elasticated rods from the connectors in the base.



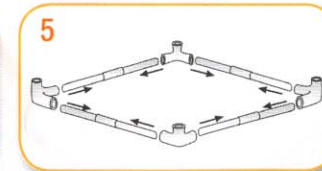
2 Remove the outer shell, fold up and place to one side.



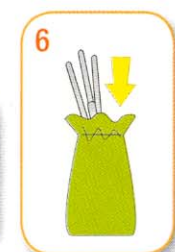
3 Remove the plastic ring from the top of the Tepee & disconnect all four elasticated rods. Place these to one side.



4 Remove the square base frame from the outer shell base, fold up the shell and place to one side.



5 Disconnect the base frame.



6 Finally, place your Tepee & all its parts back in the bag provided. It's as simple as that!